

# Pump Aggregat HPS GD FXG with 30 kW electric engine



**HPS Rental GmbH**  
Schmolkamp 4B  
D-29358 Eicklingen  
Germany

Tel: +49 (0) 5144-4933752  
Fax: +49 (0) 5144-4933753  
e-mail: [info@hps-rental.de](mailto:info@hps-rental.de)  
Web: [www.hps-rental.de](http://www.hps-rental.de)

# Gerätepass

Serien Nr.:

Baujahr:



**Hochdruckpumpenservice GmbH**  
Schmolkamp 4B  
D-29358 Eicklingen  
Germany

Tel: +49 (0) 5144-1869  
Fax: +49 (0) 5144-56605  
e-mail: [info@hps-celle.de](mailto:info@hps-celle.de)  
Web: [www.hps-celle.de](http://www.hps-celle.de)

## 1 Technische Daten

### 1.1 Maße des Pumpcontainers

4-ft.-Container mit folgenden Maßen:  
-Länge: 1200 mm  
-Breite: 2200 mm  
-Höhe : 2260 mm  
-Gewicht: 2600 KG

### 1.2 Leistungsdaten Motor

E-Motor: 30 kW 1475 U/min  
Frequenzgesteuert  
63A Anschluss

Übersetzungsverhältnis = 3,17 :1

### 1.4 Leistungsdaten Hochdruckpumpe

GD Typ: FXG  
Antrieb: 3 Fach Riemen  
Eingangsdrehzahl: max. 450 min<sup>-1</sup>  
Übersetzungsverhältnis: 4.72 : 1  
Kurbelwelle: Sonderstahl, 2-fach gelagert  
Pleuelstangen: Sonderstahl  
Kreuzköpfe: Sonderstahl, Spezial geformt  
Gehäuse: Guss  
Lagertypen: Rollen und Gleitlager  
Ölsystem: Schleuderschmierung  
Ölmenge: 17 L.  
Öltyp: Synth. 75W90  
Gewicht trocken: 1043 kg



## FXG (FG-FXG) DUPLEX POWER PUMP

### SPECIFICATIONS:

#### Maximum BHP

Mud Service: 32 (24 kw)

Ind'l. Service: 42.5 (32 kw)

#### Maximum Jackshaft RPM

Mud Service: 354

Ind'l. Service: 472

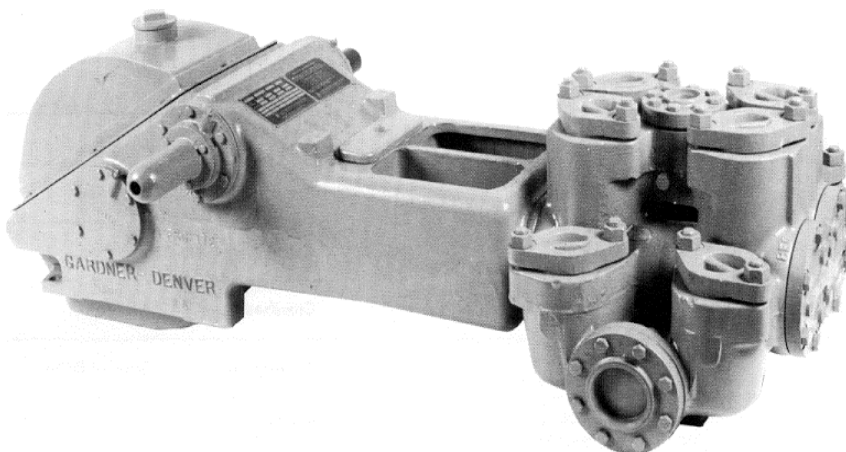
#### No. of Pistons: 2

Stroke Length: 6 in. (152 mm)

Piston Rod Load: 6,122 lbs. (2,777 kg)

Oil Capacity: 4.5 gal. (17 liters)

Pump Weight: 2,300 lbs. (1,043 kg)



### PERFORMANCE RATINGS

| FXG DUPLEX INDUSTRIAL PUMP for Oil Line, Mining and Industrial Service |             |                     |       |                  |     |              |                |                        |                                  |     |              |                |                        |                              |                    |                       |
|--|-------------|---------------------|-------|------------------|-----|--------------|----------------|------------------------|----------------------------------|-----|--------------|----------------|------------------------|------------------------------|--------------------|-----------------------|
| Model  | Stroke      | Liner Size Diameter |       | Normal Operation |     |              |                |                        | ** Maximum Recommended Operation |     |              |                |                        | *** Maximum Working Pressure |                    | Maximum Piston Load   |
|  |             |                     |       | Displacement     |     | Max Pump RPM | Jack-shaft RPM | Input HP at Max. Speed | Displacement                     |     | Max Pump RPM | Jack-shaft RPM | Input HP at Max. Speed |                              |                    |                       |
|  |             | in.                 | mm    | gpm              | lpm |              |                |                        | gpm                              | lpm |              |                |                        | psi                          | kg/cm <sup>2</sup> |                       |
| FXG(*)   | 6" (152 mm) | 5                   | 127.0 | 150              | 568 | 75           | 354            | 32                     | 180                              | 680 | 95           | 450            | 42.5                   | 310                          | 21                 | 6,122 lbs. (2,777 kg) |
|  |             | 4 ½                 | 114.3 | 121              | 458 |              |                |                        | 145                              | 550 |              |                |                        | 385                          | 27                 |                       |
|  |             | 4                   | 101.6 | 95               | 359 |              |                |                        | 115                              | 430 |              |                |                        | 492                          | 34                 |                       |
|  |             | 3 ½                 | 88.9  | 72               | 272 |              |                |                        | 85                               | 325 |              |                |                        | 646                          | 45                 |                       |
|  |             | 3                   | 76.2  | 52               | 197 |              |                |                        | 62                               | 235 |              |                |                        | 895                          | 62                 |                       |

| FXG DUPLEX MUD PUMP for Mud, Grout and Cement Service |             |                     |       |  |     |              |                |                        |                              |                    |                       |  |  |
|---|-------------|---------------------|-------|--|-----|--------------|----------------|------------------------|------------------------------|--------------------|-----------------------|--|--|
| Model   | Stroke      | Liner Size Diameter |       | Normal / Maximum Recommended Operation |     |              |                |                        | *** Maximum Working Pressure |                    | Maximum Piston Load   |  |  |
|   |             |                     |       | Displacement                           |     | Max Pump RPM | Jack-shaft RPM | Input HP at Max. Speed |                              |                    |                       |  |  |
|   |             | in.                 | mm    | gpm                                    | lpm |              |                |                        | psi                          | kg/cm <sup>2</sup> |                       |  |  |
| FXG(*)  | 6" (152 mm) | 5                   | 127.0 | 150                                    | 568 | 75           | 354            | 32                     | 310                          | 21                 | 6,122 lbs. (2,777 kg) |  |  |
|   |             | 4 ½                 | 114.3 | 121                                    | 458 |              |                |                        | 385                          | 27                 |                       |  |  |
|   |             | 4                   | 101.6 | 95                                     | 359 |              |                |                        | 492                          | 34                 |                       |  |  |
|   |             | 3 ½                 | 88.9  | 72                                     | 272 |              |                |                        | 646                          | 45                 |                       |  |  |
|   |             | 3                   | 76.2  | 52                                     | 197 |              |                |                        | 895                          | 62                 |                       |  |  |

Based on 90% mechanical efficiency and 100% volumetric efficiency.

Specifications subject to change without notice.

\*\* These speeds are recommended for favorable suction conditions and consideration must be given to viscosity and character of fluids.

\*\*\* Maximum working pressure shown applies to the fluid ends. Power ends are designed for certain maximum piston rod loads, and in service the power end determines the maximum pressure on a given size piston. Tabulated maximum pressure for any given size piston for maximum piston rod load must not be exceeded even at reduced RPM. Fluid cylinder liners and pistons are interchangeable in all sizes except for the FXF cylinders fitted with 4 ½" parts and FXX and FXD cylinders with 5 ½" parts.